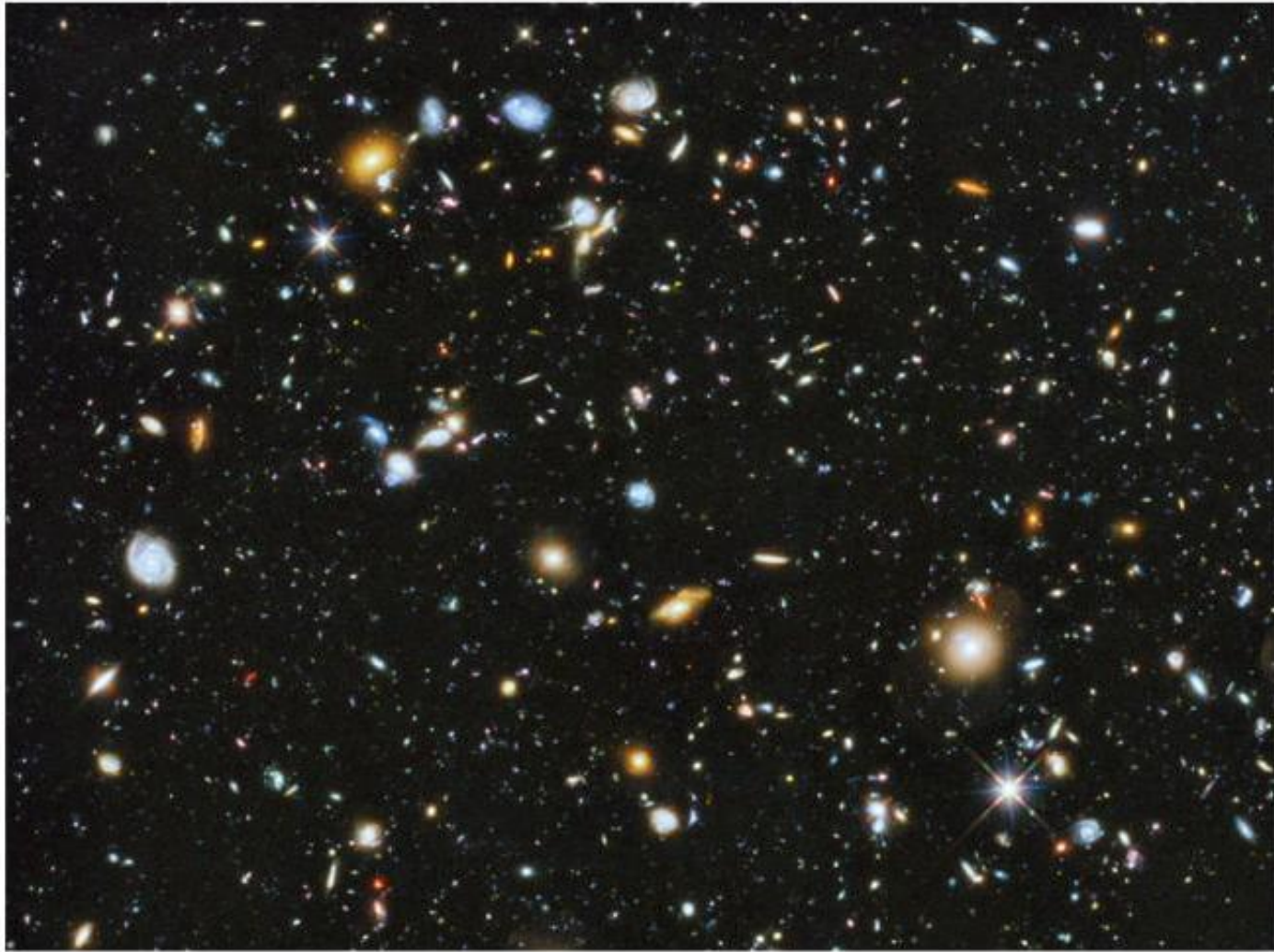


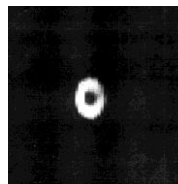
Space Travel Innovations



Micro-Fusion Reactors to Lift Payloads into Orbit with 99% Cost Savings per Kilogram

A micro-fusion reactor creates stable plasma spiral toroids similar to ball lightning that remain stable in partial atmosphere with no magnetic fields for containment. Toroids are then fused by colliding them.

Micro-fusion reactors could lift payloads into orbit for \$100 per pound by replacing 8,000,000 pounds of hydrocarbon fuel with one pound of fuel. A jet/ramjet engine would heat air for thrust using fusion energy instead of combustion – reducing by 10,000 times the fuel load mass to fly from 0 km to 160 km in altitude. Orbital velocity could be achieved using NASA Hyper-X technology. A micro-fusion reactor in aircraft could replace 30,000 pounds of jet fuel with 2.2 pounds of fusion fuel.



An Electron Spiral Toroid captured at 1/10,000 shutter speed.

Searl Effect Generator

The Searl effect generator creates a strong anti-gravity field. It comprises of three concentric magnetic rings with magnetic rollers rolling around the rings. Both the rollers and rings are comprised of four layers of titanium, iron, nylon, and neodymium.

The magnetic fields impressed on the rollers have both AC and DC components. The AC component is for floating the rollers so they don't touch the rings. The DC component is to prevent them from flying off. The innermost set contains a minimum of 12 rollers for the same reason that a linear motor will not operate with less than 12 phases.

The inner set of rollers travel around at 250 miles per hour, the middle set travels at approximately 600 miles per hour, and the outer set at approximately 1500 miles per hour. Hundreds of millions of volts are generated the electrical energy of which is picked up by brushes positioned all around the outside set of rollers.

An uncontrolled Searl effect generator will rise about 50 feet as the rollers increase speed, emit a light blue halo which indicates energy is being extracted from the ether, and then shoot up into the sky gaining speed, never to be seen again. A Searl effect generator can be easily controlled by immersing it in an electromagnetic wave field the frequency of which is a harmonic of the Searl effect generator's primary frequency. While in resonance, the magnetic poles of the rollers reach a unification state, and they stop moving.

David Hamel's Gravito Magnetic Device

David Hamel's gravito magnetic device (GMD) encloses opposing magnetic fields that have varying vector angles to produce a strong anti-gravity field. The GMD has magnets attached to radial spokes or arms that are jointed. These magnets are floated in a magnetic housing and when properly biased, continue to spin, gaining momentum and speed with each rotation and achieving tremendous electrostatic buildup on the outside rim.

The parts inside the GMD are configured in such a way as to promote an enclosed constant variation of opposing magnetic fields. In the resting state, the moving cones are balanced and stabilized in a magnetic field repulsion, like a magnetic bearing. The startup of the GMD is initiated by lowering a magnet at the center top of the shell, inside the shell, towards the momentarily magnetically balanced moving cones.

As the center magnet, which opposes the one attached at the center of the upper moving cone, is lowered inside the GMD, it forces the upper cone to move sideways, shifting the magnetic balance between the cones inside the GMD. The cones stay offset to each other for a short while and then plasma-like energy starts to build up around the GMD. This energy built up creates a shift of colors from red-orange to light blue and then white. Following this effect the GMD starts to lose weight and quickly generates an upper lift in a greater ratio than its total weight. If a control system is in place, it is easy to stop its effect.

David Burns' Anti-Gravity Flying Saucer

Scottish inventor David Burns has shown at a conference of energy researchers a video of his four-foot model of a self-propelled flying saucer actually flying around a field under remote radio control.

His model aircraft has some unusual flying characteristics. For instance, because of its anti-gravity field produced by a circular mechanism in its surprisingly thin body, it doesn't land like a plane on wheels. It flops down on the ground on its belly. It is launched by holding it up and throwing it forward.

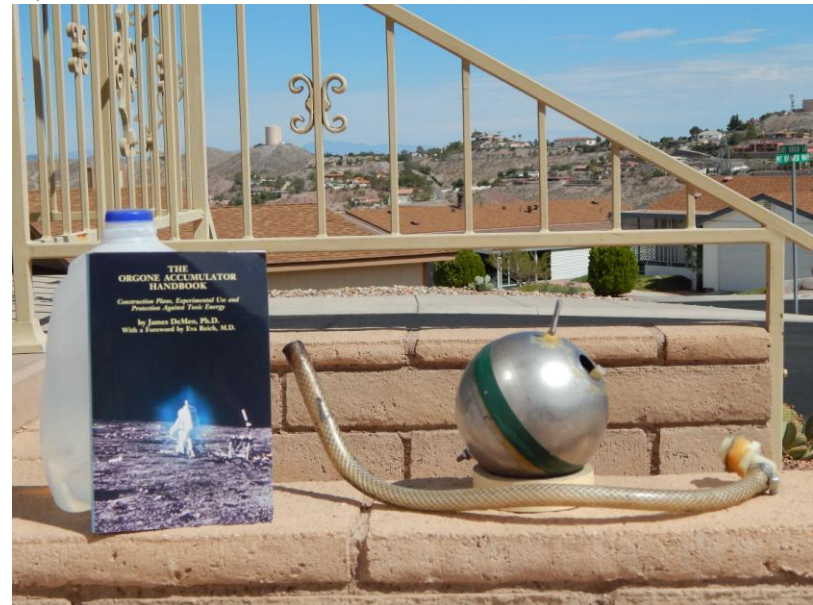
While it has a small electric motor-powered propeller on its front and a rudder on its rear so it can bank somewhat on turns, it can't fly or land upside down because of its anti-gravity field. It is controlled by remote radio controls like a model airplane.

Orgone Energy Accumulators May Impart Anti-Gravity to a Rocket

A Moe-Joe cell operates as an orgone energy accumulator. Anecdotal reports by Moe-Joe orgone energy cell experimenters have included observations of slight to moderate anti-gravity effects. When unpacked and assembled without even having been filled with specially charged water, a Moe-Joe orgone energy cell when picked up will sometimes feel light as an empty beer can. When picked up at other times it sometimes will feel noticeably heavier. When installed on vehicles, no water nor hydrogen enters the engine.

Mounting one or more Moe-Joe orgone energy cells inside a rocket may reduce its attraction (weight) by the earth's gravity. However, experimenters should first carefully test for strange damage to a rocket's electronics, etc!

The Moe-Joe orgone energy cell in a car sometimes makes the car feel noticeably lighter and speedier as well as more powerful due to a possible anti-gravity effect. The Moe-Joe orgone energy cell shown to the right increased the mileage of a 1993 Saturn from 30 to 47 MPG, and reduced emissions by 90%.



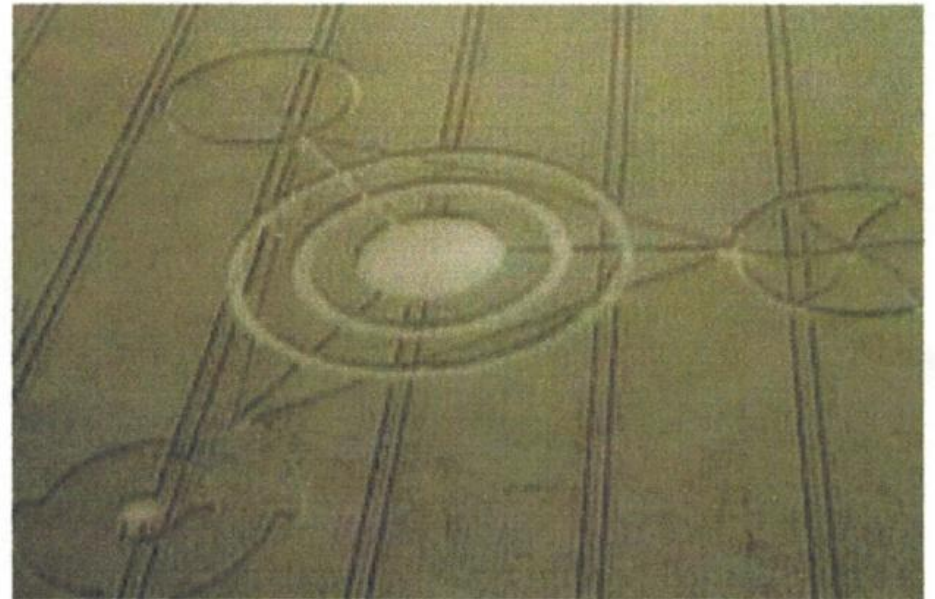
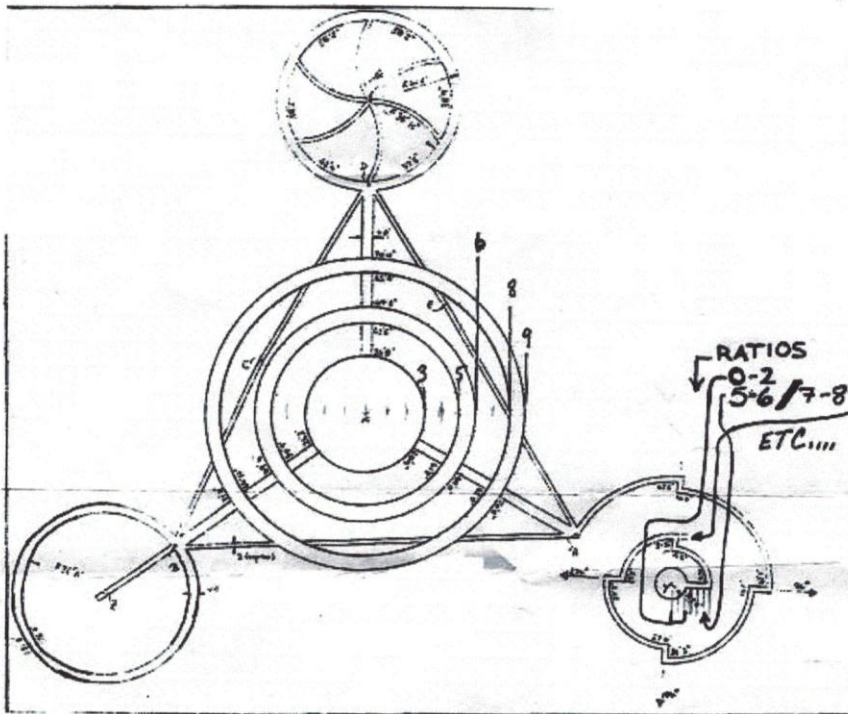
Inertia Reduction, and Possible Impulsion by Conditioning Electromagnetic Fields

Electromagnetic fields can be specially conditioned to couple with gravity. Propulsion takes place by action and reaction of fields. An electric charge or magnetic flux can interact for propulsion, with electric and magnetic fields existing in space. This would include fields of space caused by the flow of charged particles, and the rotation of celestial bodies. These effects are mild. Zero-point energy could be the key for coupling. Bringing inertial resistance to zero would amplify the effects of space fields.

Great acceleration with very little force of thrust would be possible. Also deceleration with very little force of thrust. There would be very little stress on the vehicle and its inhabitants. Zero-point energy is isotropic in undisturbed space, and Lorentz invariant. Such is not the case with accelerating bodies. Haisch, Rueda, and Puthoff suggest that the inertia of bodies might be the result of spectral distortion of zero-point energy in inertial frames of accelerating bodies, and of a resisting electromagnetic Lorentz force that arises from the distortion.

Mike Hanson's Flying Saucer Engine

Gravity is this; the atom/element in question which exists only between a particular format of bosons will make a 'dent' in space. These 'dents' will attract one another because in the constant noise of space (particle noise in the passage of time) each gives a signature wave. A machine with the ability to cause dead space of format 3 to convert suddenly into format 7 would make a temporary and artificial type of weight. The crop circle photo exactly depicts Mike Hanson's design of a flying saucer engine which comprises of a triangle of three anti-gravity spheres and one dematerializer in the center. A dematerialization device is constructed of copper only.



Inertia-less Craft and Artificial Gravity

An inventor has designed inertia-less craft and artificial gravity (details are proprietary).

Domestic Lens

The Domestic Lens™ is a large, lightweight, thin and inexpensive lens for the optical industry. Immediate applications could be large-diameter lenses to be used in telescopes, photographic, viewing and other applications at a fraction of the cost of large diameter lenses.

The abrasion resistant Domestic Lens™ would be as much as 50 times lighter than traditional lenses. They would be of higher resolution than Fresnel lens.

An inexpensive proprietary manufacturing technique allows manufacturing in most focal lengths in a relatively short time for extremely large observatory telescopes. Telescopic focal lengths can be adjustable to some extent.

Since these telescopes would be much cheaper and faster to make than telescopes with heavy ground glass lenses an observatory could install multiple telescopes with overlapping focal lengths – possibly each an acre in size or more.

Anti-Gravity Ether Shield

The problem with the famous Michelson-Morley experiment measuring the speed of light was that the interferometers used in the experiment were mistakenly set up in the horizontal plane. So therefore, the speed of light was measured to be constant. Also, the flawed experiment supposedly proved there is no etheric energy in the vacuum of space. If the interferometers had been set up in the vertical position, the speed of light would have decreased going up-hill, and increased going down-hill. The false reading that the speed of light is constant greatly influenced Einstein's theory of relativity, which is now thought by etheric energy researchers to be incorrect.

Imagine a block of iron hanging from a ceiling. If an ether shield is placed on the left side of the iron block, the ether shield would deflect the ether flowing into the left side of the iron block. This creates a sort of force vacuum, and the iron block would swing left up to the ceiling trying to fill the vacuum.

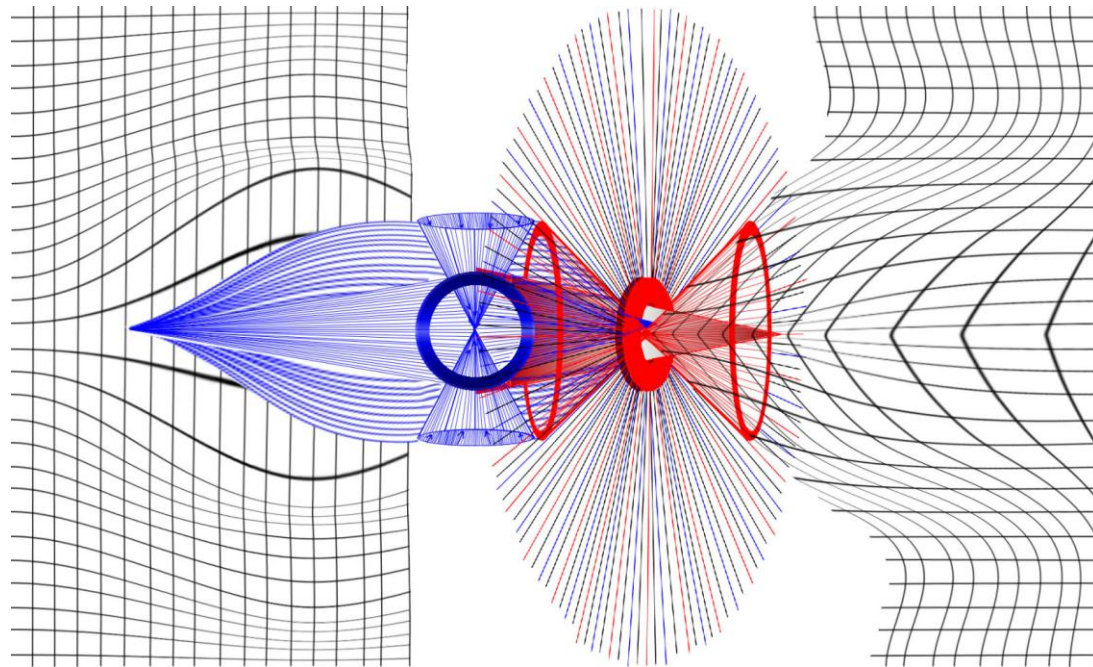
Anti-gravity ether shield segments can be placed around the nose cone of a rocket for forward propulsion. These ether shields operate at very high voltages.

Ether shield segments can also be placed all around the sides of a circular vehicle mounted on wheels. Now the vehicle moves in the direction of turned-on ether shield segments. If additional ether shield segments are placed under the circular vehicle and on top of a curved roof, and there are windows between the body of the vehicle and the curved roof, the resemblance to the popular conception of a flying saucer is startling.

Magnetic Vortex Drive Engine

Magnetic fields are manipulated to create a magnetic analog of the Schauburger principle of vortex cavitation. The field created by both expanding and compressing local magnetic fields propels a craft as if it were falling into a hole (one created magnetically).

The neutral point between these two fields is the location of crew friendly habitat. All hull surfaces pointing toward the center would be where the affect of what we might call magnetic attraction would create some semblance of gravity. Anyone inside this craft would not be affected by inertia because they would be inside the magnetic field and only affected by it. Therefore almost any angle and any speed turn is possible.



Meta-Stable Helium as Rocket Propellant

A special formulation of meta-stable helium will be the ideal rocket propellant for expanding human civilization into the solar system (e.g. to colonize Mars). When a micro-crystal of meta-stable helium is triggered by the right frequency of laser light, it will return to the form of gas as if it had been compressed by tens of millions of atmospheres of pressure. It will release 43 times more energy per unit weight than any conceivable chemical combination.

Gases like helium or hydrogen are converted to liquid metallic plasmoids which can be levitated magnetically in a vacuum and allowed to cool off by radiation, which will then cause them to crystallize into metastable materials, including those of high-energy density materials.

Ultra-high temperature plasmas, relevant to thermonuclear fusion R&D, are utterly irrelevant to relatively low-temperature liquid metallic plasmoids.

With meta-stable helium as fuel, a rocket could take a 50-percent payload to Mars and back in two weeks. (Accelerate there and return at one gee.)

Space Drive Engine

The space drive engine provides unidirectional thrust generated by a rotating gyroscope moved alternately to and fro along the thrust vector direction while precessing the gyroscope as it moves in one direction but not precessing it in the opposite direction.

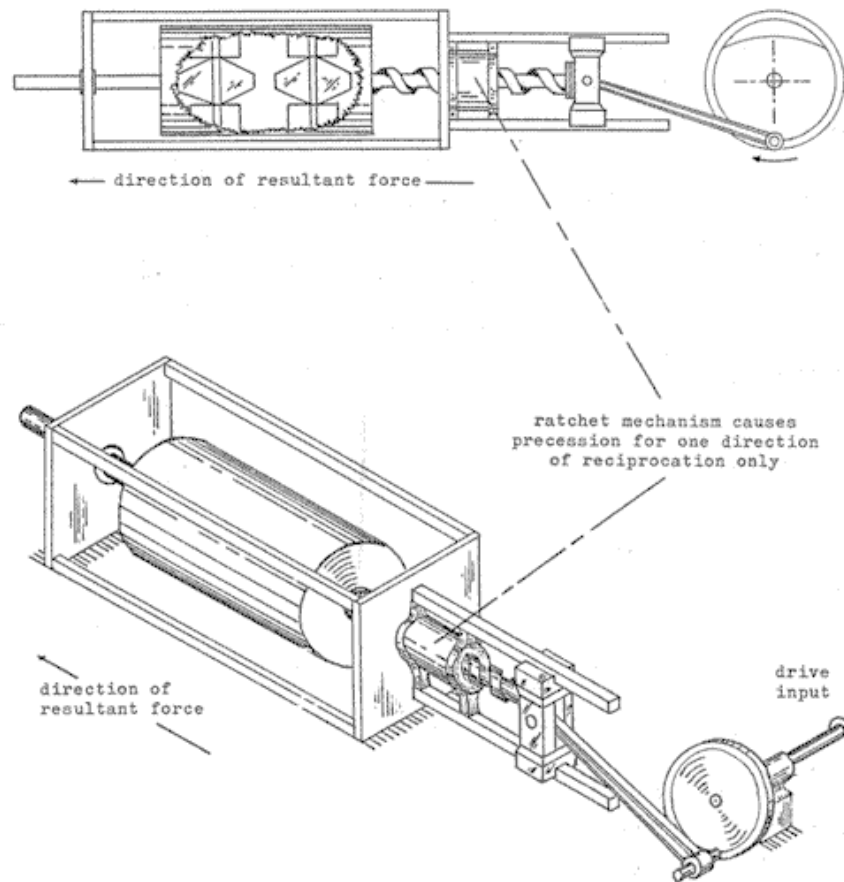


Figure 3. Linear Force Machine (mechanical)

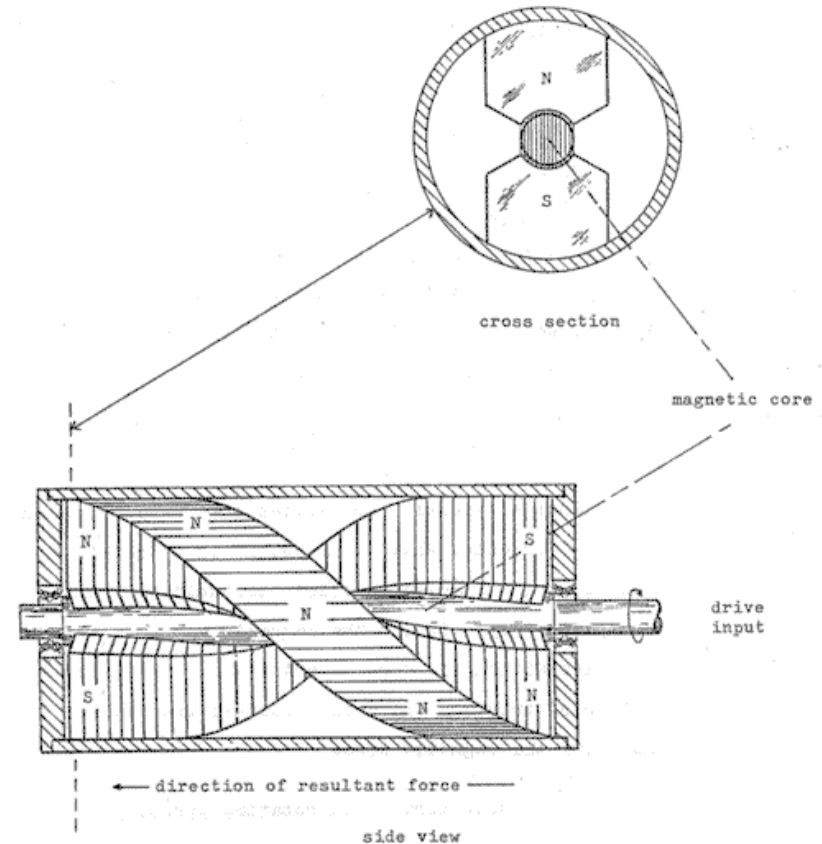


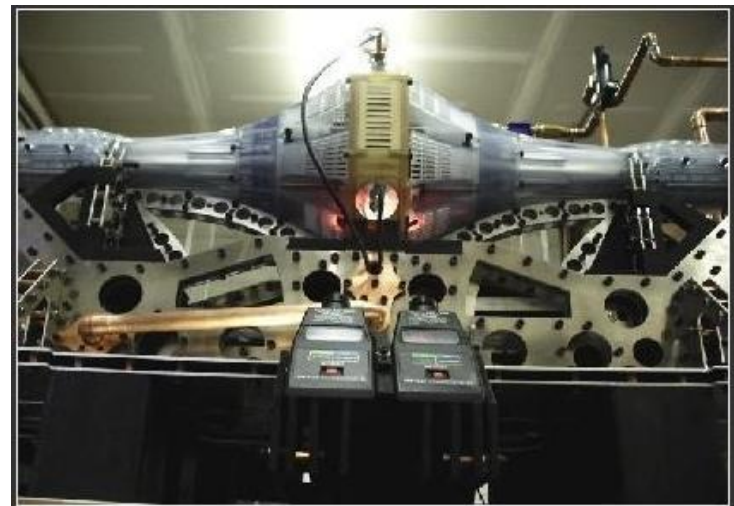
Figure 4. Linear Force Machine (magnetic)

Torsion Field Communications

Electromagnetism is produced by charge, and gravity is produced by mass. A torsion field is produced by the *spin* of a mass, whether it is an electron or as large as a star. Electromagnetic fields such as light, radio, and magnetism are vector fields in that they possess both magnitude and direction of propagation. Gravitational fields are also vector fields with both magnitude and direction. Torsion fields are scalar; they only have the property of magnitude. Torsion fields operate independently of direction. They also have the extraordinary property of holographically operating throughout the *entire* Universe without respect to time nor distance.

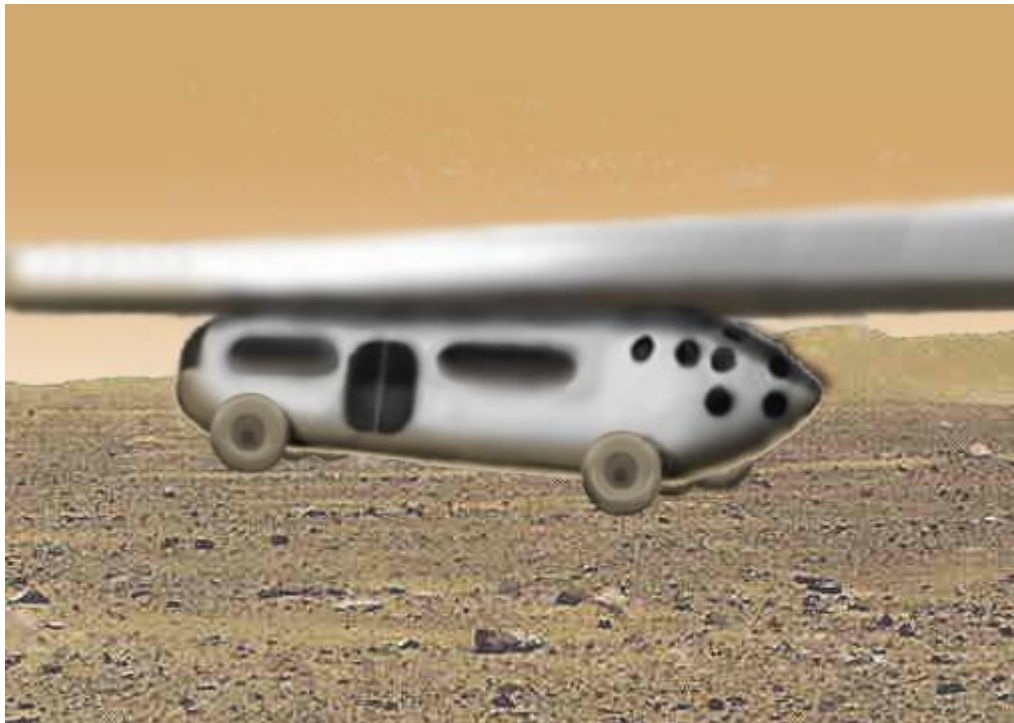
The theoretical maximum capacity of torsion field communications is apparently 40 billion channels of three-dimensional holographic television with a speed faster than one billion times the speed of light through the entire earth without attenuation or even between planets instantly. Torsion field cell phones would allow world-wide talking or texting.

A unique design has been developed for a counter-rotating torsion field generator based on a newly patented micro-solenoid technology, special crystalline lattice cells, counter-rotating mono-polar magnetic plates, mono-chromatic standing wave lasers, and some scalar parallel processor technologies from the Swiss Institute of Technology in Zurich.



Ground Transportation for Colonies on Mars and Earth's Moon

A colony on Mars or Earth's moon with more than one building would require ground transportation between the buildings. Analysis shows that overhead light suspended rail would be more practical than individual vehicles being driven between the buildings on the ground. Compensating for weak gravity, mining equipment could brace themselves against an elevated rail's structural supports when digging trenches for subways or valuable ores in the ground.



Warp Drive Would Travel Faster than Light

It is possible to travel faster than light. You just wouldn't travel faster than light. The Alcubierre drive, as it is known, involves expanding the fabric of space behind a ship into a bubble and shrinking space-time in front of the ship. The ship would rest in between the expanding and shrinking space-time, essentially surfing down the side of the bubble.

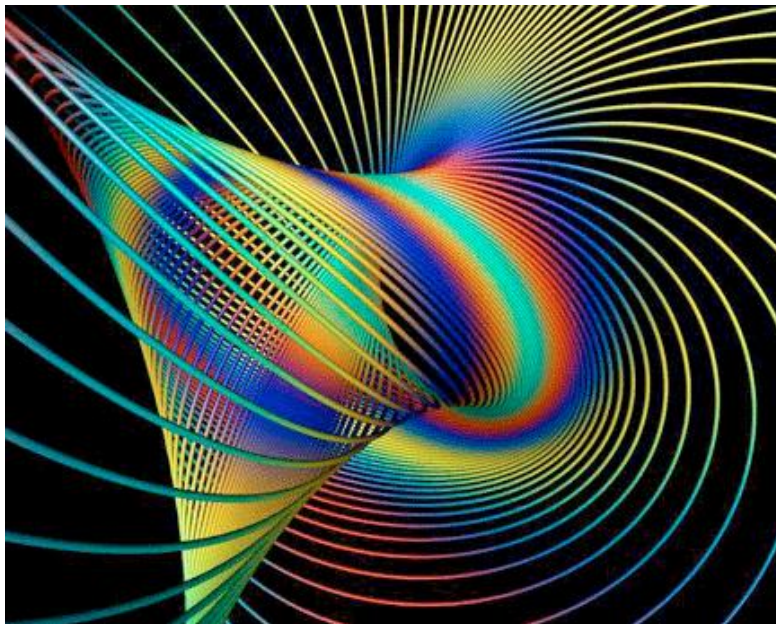
A beam of light next to the ship would still zoom away, same as it always does, but a beam of light far from the ship would be left behind. That means that the ship would arrive at its destination faster than a beam of light traveling the same distance, but without violating Einstein's relativity, which says that it would take an infinite amount of energy to accelerate an object with mass to the speed of light, since the ship itself isn't actually moving.

By manipulating extra dimensions with astronomical amounts of energy, a faster-than-light engine, or warp drive, could be created that would bend but not break the laws of physics. The tricky part is that the ship wouldn't actually move; space itself would move underneath the stationary spacecraft.

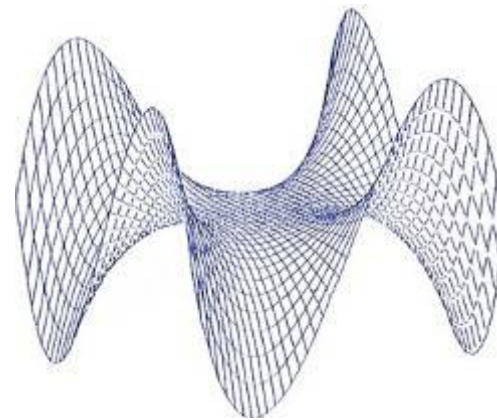
To create the bubble the ship would surf down may require manipulating the 11th dimension, a special theoretical construct of M-theory (the offspring of string theory). If the 11th dimension could be shrunk behind the ship it would create a bubble of dark energy, the same dark energy that is causing the Universe to speed up as time goes on. Expanding the 11th dimension in front of the ship would eventually cause it to decrease, although two separate steps are required. Exactly how the 11th dimension would be expanded and shrunk is still unknown.

Torsion Field may 'Uncurve' Space and Enable Advanced Propulsion Devices

Electric, magnetic, and gravitic fields all support propagation velocities that are at the speed of light. The torsion field is different from these other three fields that could have spherical symmetry. Torsion could be right-handed or left-handed and is based upon a cylindrical field and can be created by large accumulations of electricity and rotation of a body that if above a certain speed, would enhance the torsion field. Russian astronomers have detected the present locations of spinning stars via their torsion fields even though their light has left many years ago.



Torsion Field: Einstein's Metric Torsion Tensor allows a spin-field to twist spacetime.



Twisted Space: Torsion can uncurve space for antigravitic and faster-than-light propulsion.

IPMS-Chernovitsky Super Ceramics

Kiev, Ukraine's I.N. Frantsevich Institute for Problems of Materials Science (IPMS) is one of more than 70 institutes founded after World War II. 6600 of the most brilliant theoretical physicists in the entire Soviet Union were commissioned to research materials for nearly 50 years. Because the Institute was forced to operate in a purely theoretical environment, with no pressure whatever to meet production or marketing deadlines, operating virtually isolated from any contact with the outside world, that the scientists were able to produce at least 7 whole new sciences, 30 technologies, and 130 materials unknown in the West.

One of the Institute's four sites, IPMS-Chernovitsky, developed moldable, machine-able, ultra-high temperature, super-hard, and strategic metal-alloyed ceramic substances. These ceramics can withstand operating temperatures of 1200 degrees centigrade. This is more than 400 degrees centigrade higher than can be tolerated by other known ceramic materials commercially available anywhere else in the world. In fact this is higher than the theoretical limit allowed by the quantum mechanics model relied on in the West.

These materials are being utilized in entirely ceramic internal combustion engines, high-speed jet turbines and self-lubricating bearing surfaces. The ceramics produced at the IPMS-Chernovitsky plant have been made harder by fully one factor of hardness than the hardest alloyed metal machine tools currently produced by any other known means of manufacture. They have been made harder by at least one full order of magnitude than either natural or synthetically produced diamonds.

Ceramic pistons manufactured for use in ceramic diesel engines will, when struck by a hard object, produce a clear resonant tone which persists for more than seventeen seconds. This is at least eight seconds longer than the resonant persistence produced by the finest glass or crystal ever manufactured.

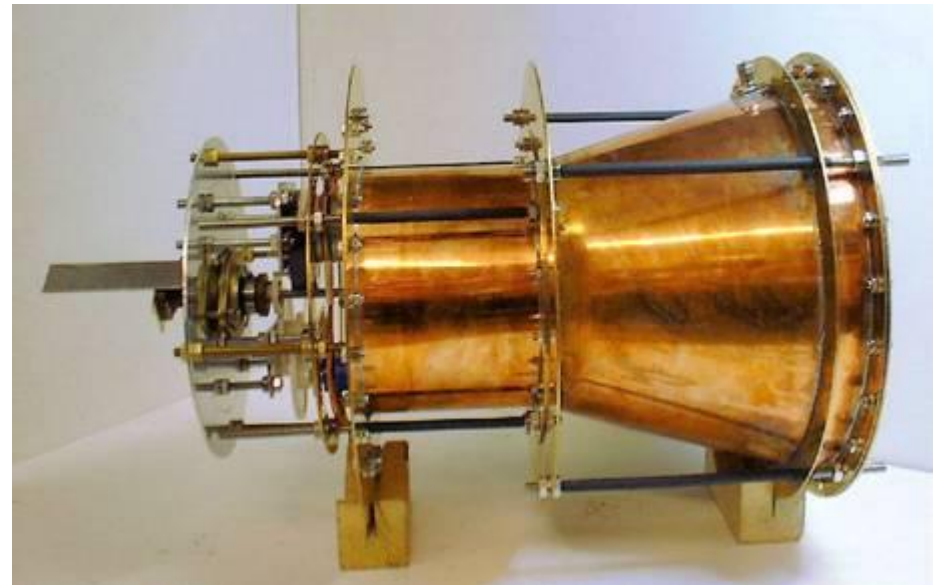
Microwave Engine Could Revolutionize Space Travel

In an ordinary engine the rocket moves forward as fuel is flung backwards. NASA engineers have produced tiny amounts of thrust from an engine without propellant – an apparent violation of the conservation of momentum; the law of physics that states that every action must have an equal and opposite reaction.

The ‘Cannae drive’ uses electricity to generate microwaves, bouncing them around inside a specially designed container that *theoretically* creates a difference in radiation pressure and so results in directional thrust. The radio frequency resonant cavity thruster design, which is unique as an electric propulsion device, is producing a force that is *not attributable to any classical electromagnetic phenomenon* and therefore is potentially demonstrating an interaction with the quantum vacuum virtual plasma.

The Cannae Drive’s thrust is less than a thousandth of the thrust produced by a similar invention known as the EmDrive – another fuel-less thruster.

Shown is a model of the EmDrive. The shape of the engine (including numerous interior wells and channels) are intended to create directional thrust from microwaves.



Reference:

A file of 262 pages of “Space Travel Innovations” is available for free downloading at padrak.com/vesperman and commutefaster.com/vesperman.html.